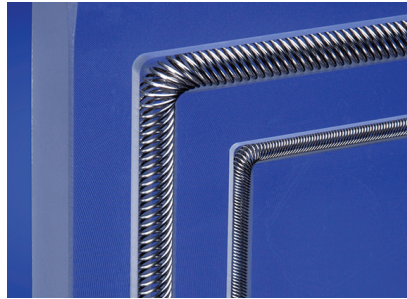


## Bal Spring® Canted Coil Springs in Lengths and Welded Rings

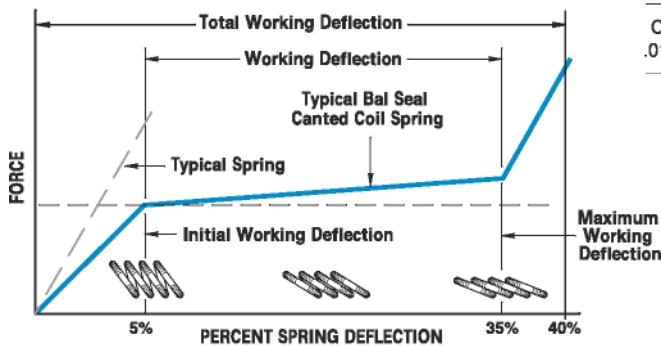
Bal Spring® canted coil springs exhibit a unique deflection and force behavior upon compression. Each angled coil produces a radial or axial force for uniform loading around the entire spring perimeter. Each coil acts independently, and remains in contact with the mating surface for excellent conductivity in electrical applications and compensates for large mating tolerances, alignment, and surface irregularities. Available in a variety of diameters, cross-sections, lengths, and wire materials with silver, gold, and other highly conductive platings, Bal Spring canted coil springs offer superior conductivity and effective shielding against EMI/RFI in a lightweight, compact profile. Their mechanical properties also enable designers to fasten (latch, lock, and hold) and isolate parts from vibration.

### BENEFITS

- Uniform loading and wider mating tolerances
- Minimal electrical contact resistance
- Reduced assembly time
- Accommodate a wide range of mechanical and electrical system design requirements
- Multi-function component conducts, connects and shields against EMI



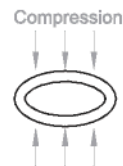
### Bal Spring Compression



Coil Height  
.015" to .700"



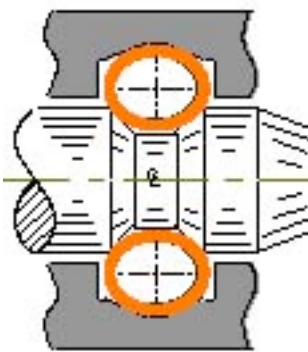
Canted Coil Spring Uncompressed



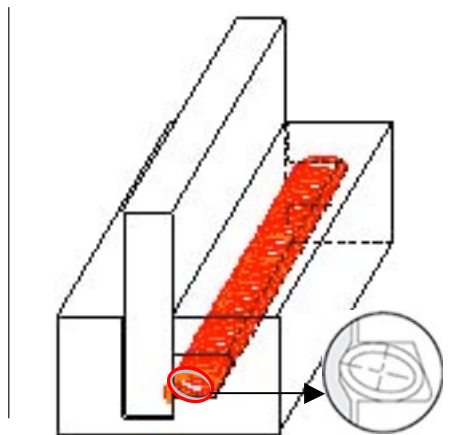
Canted Coil Spring Compressed

### Typical Functions

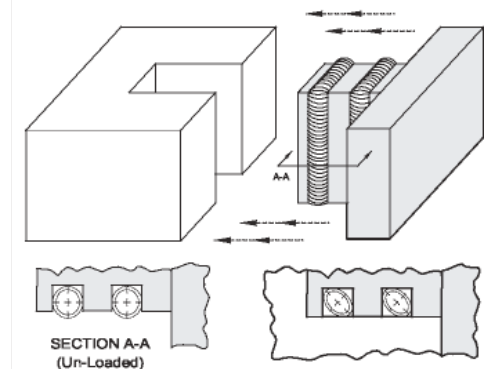
#### Mechanical Retention



#### EMI/RFI Shielding/Grounding



#### Electrical Conductivity



PATENTS: The items described in this page include products that are the subject of issued United States and foreign patents or products where patents are pending, including the following: Patents 6,641,141 B2; 7,210,398 B2; 6,161,838; 5,992,856; 5,134,244

U.S. Address: 19650 Pauling Foothill Ranch, CA 92610-2610 • Phone: (949) 460-2100 • Fax: (949) 460-2300

BV Address: VIDA Building, First Floor • Kabelweg 57 • 1014 BA Amsterdam • The Netherlands • Phone: 31 20 638 65 23 • Fax: 31 20 625 60 18

Bal Seal Engineering is certified to ISO 9001 | [www.balseal.com](http://www.balseal.com)